

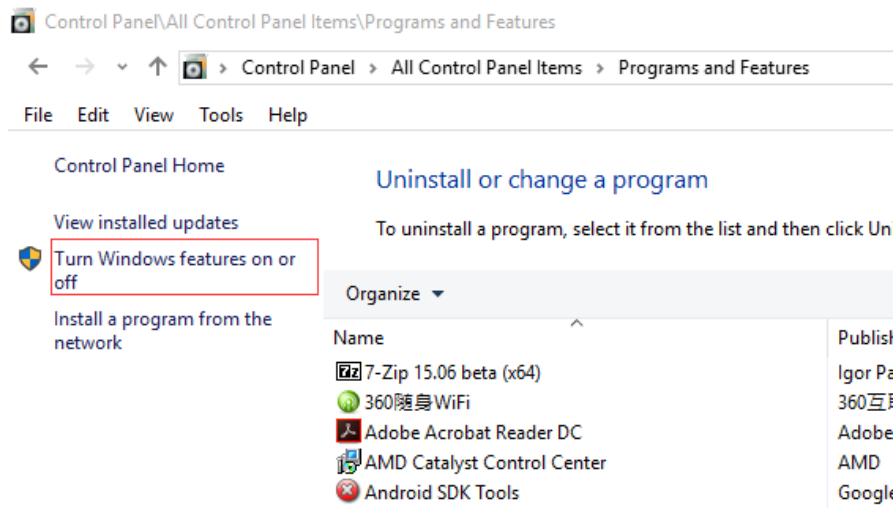
Deploy ASP.NET Application to IIS

This blog guides you how to deploy your ASP.NET/MVC application to IIS web server. And make it public to internet. There are totally 4 steps:

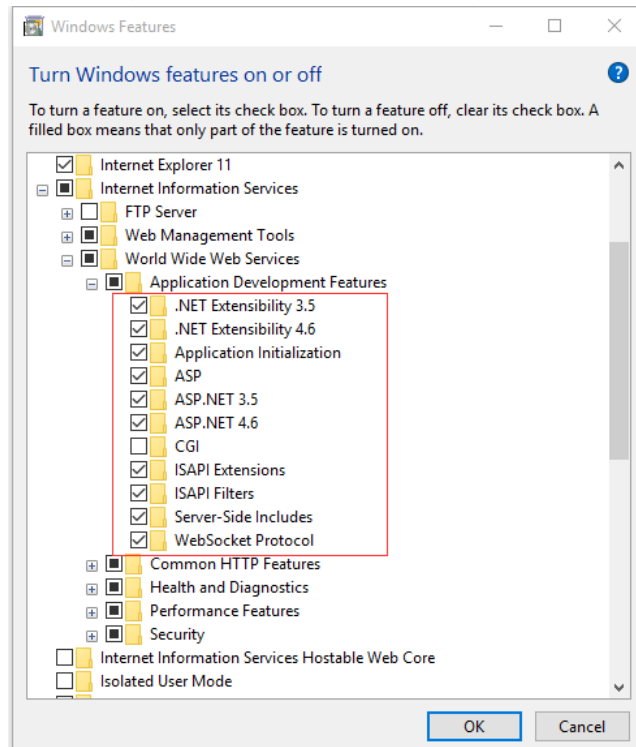
- Install required components in IIS.
- Publish files to IIS: copy files to server and create website in IIS.
- Add Port Exception to Windows Firewall.
- Assign public IP Address to your website.

1. Install required components in IIS

Control Panel-> Programs and Features

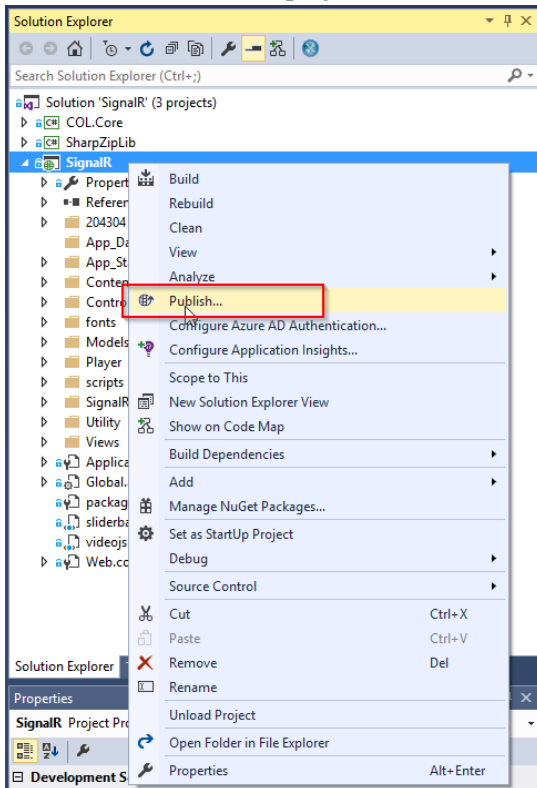


Select IIS(Internet Information Services)

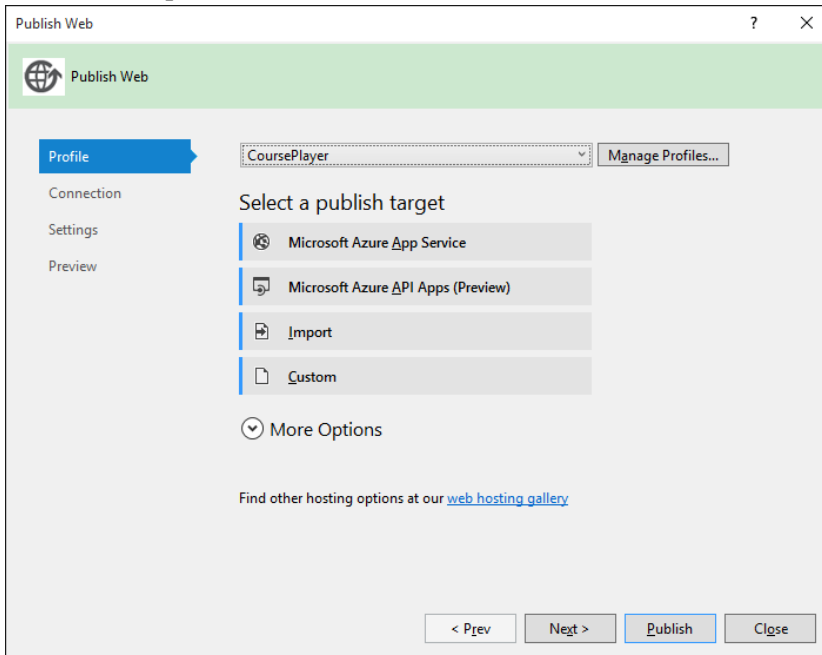


2. Publish files to IIS

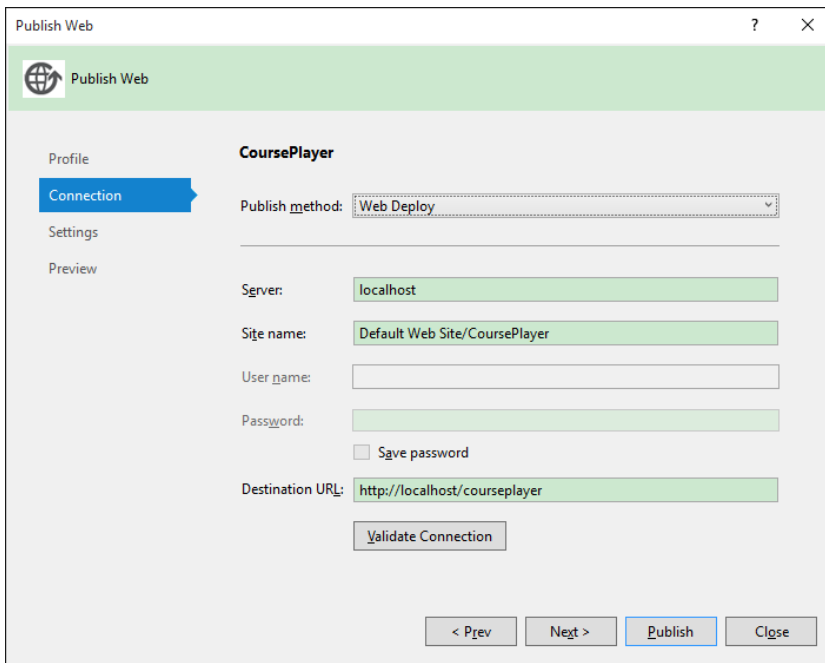
2.1 In Visual Studio, select project -> Publish...



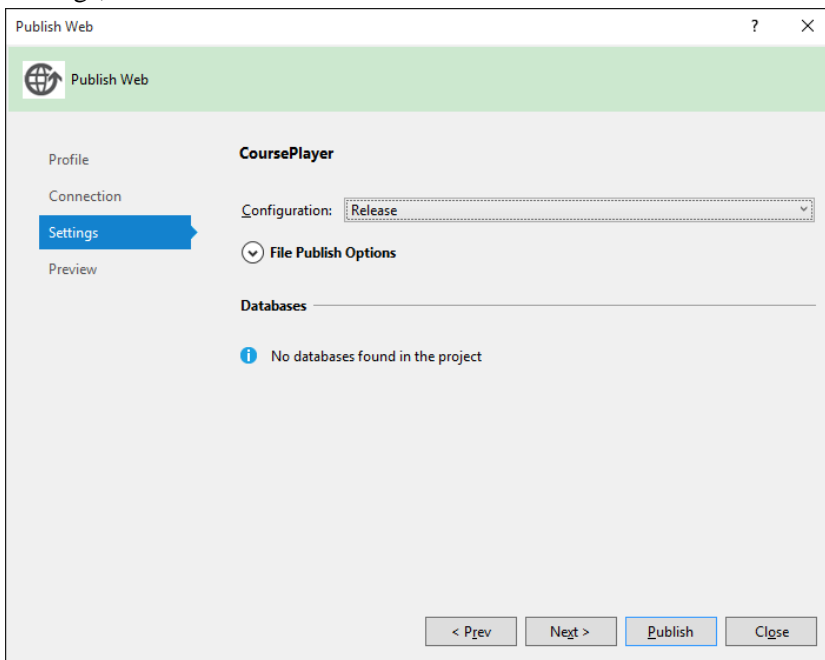
2.2 Create a new profile



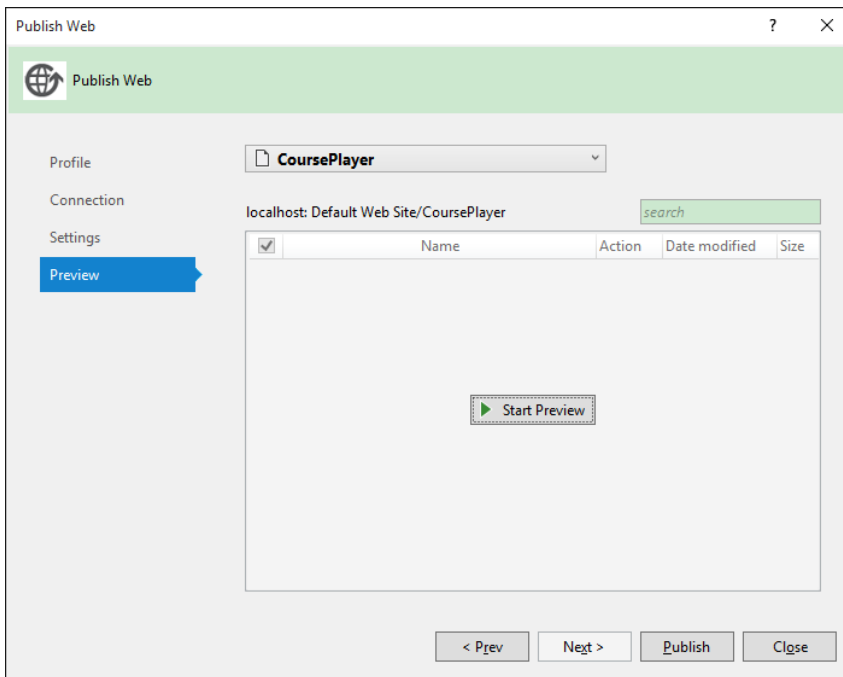
2.3 Connection, configure server and website. Here we choose the default website.



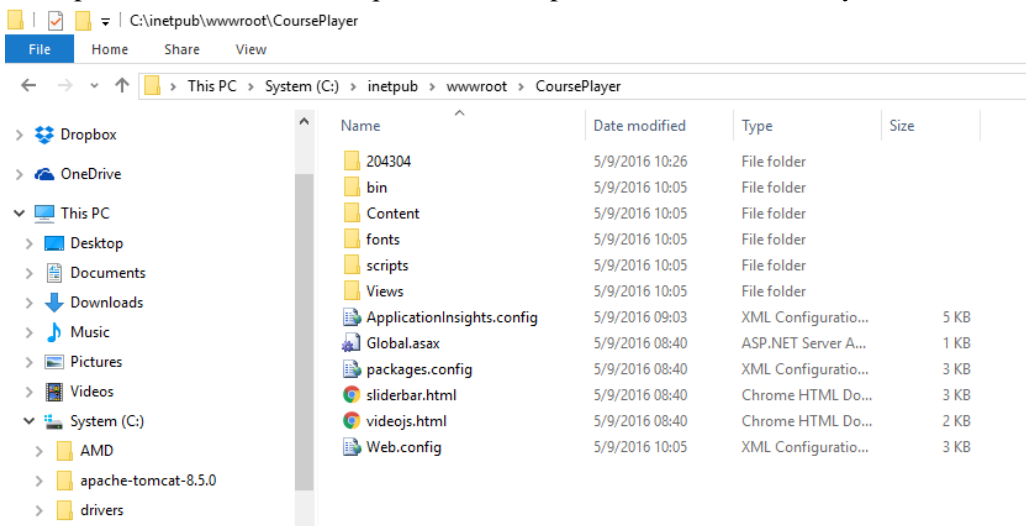
2.4 Settings, choose 'Release'.



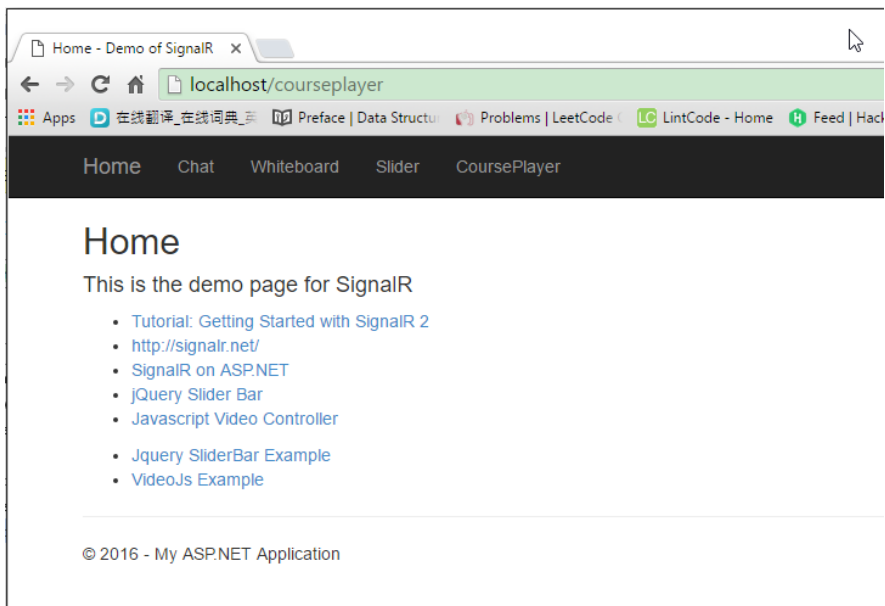
2.5 Preview, check what files are to be deployed.



2.6 After publish, all of files are copied to 'C:\inetpub\wwwroot\CoursePlayer'.



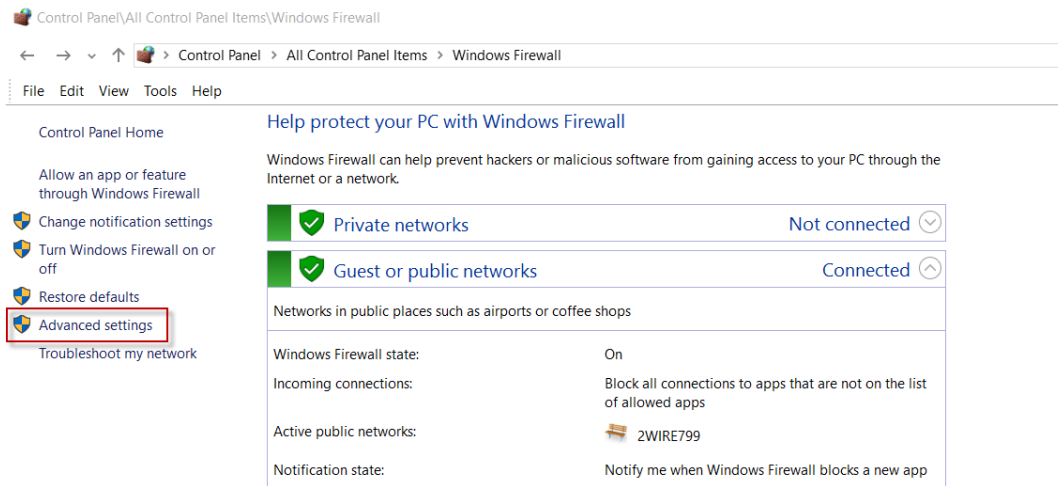
Your web browser is opened automatically and accesses your website.



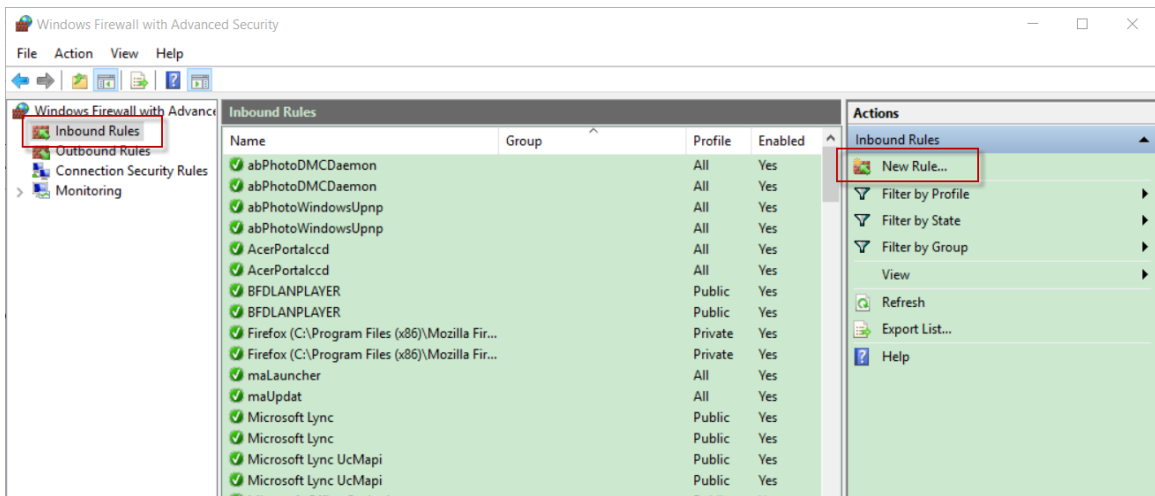
3. Add Port Exception to Firewall

3.1 Control Panel -> Windows Firewall

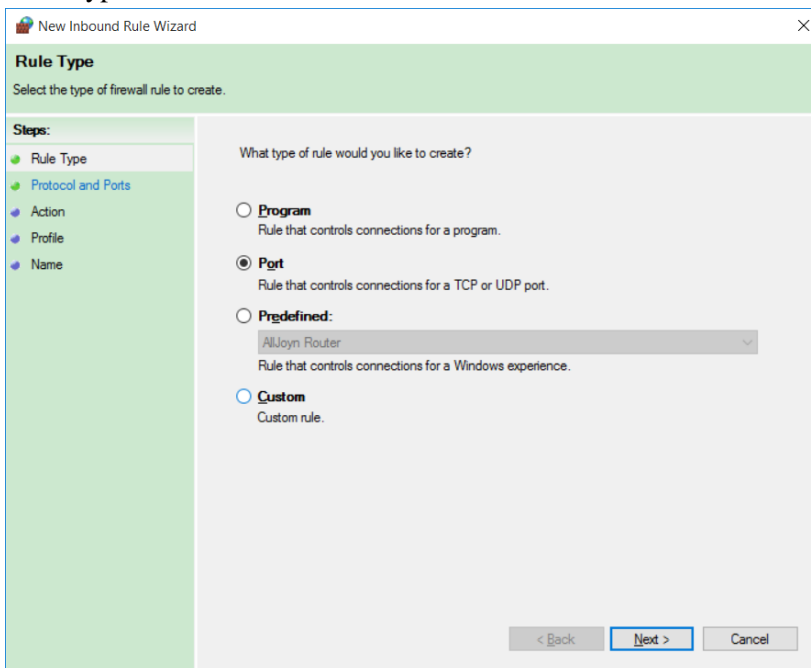
3.2 Advanced setting



3.3 Inbound Rules -> New Rule...



3.4 Rule Type



3.5 Protocol and Ports

New Inbound Rule Wizard

Protocol and Ports

Specify the protocols and ports to which this rule applies.

Steps:

- Rule Type
- Protocol and Ports
- Action
- Profile
- Name

Does this rule apply to TCP or UDP?

TCP

UDP

Does this rule apply to all local ports or specific local ports?

All local ports

Specific local ports:

Example: 80, 443, 5000-5010

< Back Next > Cancel

3.6 Action

New Inbound Rule Wizard

Action

Specify the action to be taken when a connection matches the conditions specified in the rule.

Steps:

- Rule Type
- Protocol and Ports
- Action
- Profile
- Name

What action should be taken when a connection matches the specified conditions?

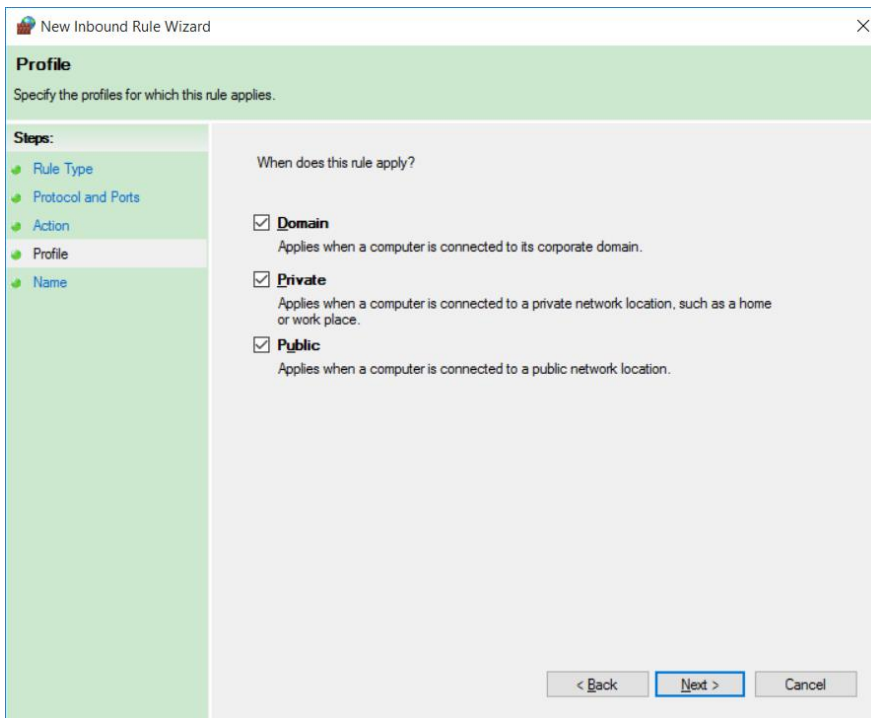
Allow the connection
This includes connections that are protected with IPsec as well as those are not.

Allow the connection if it is secure
This includes only connections that have been authenticated by using IPsec. Connections will be secured using the settings in IPsec properties and rules in the Connection Security Rule node.

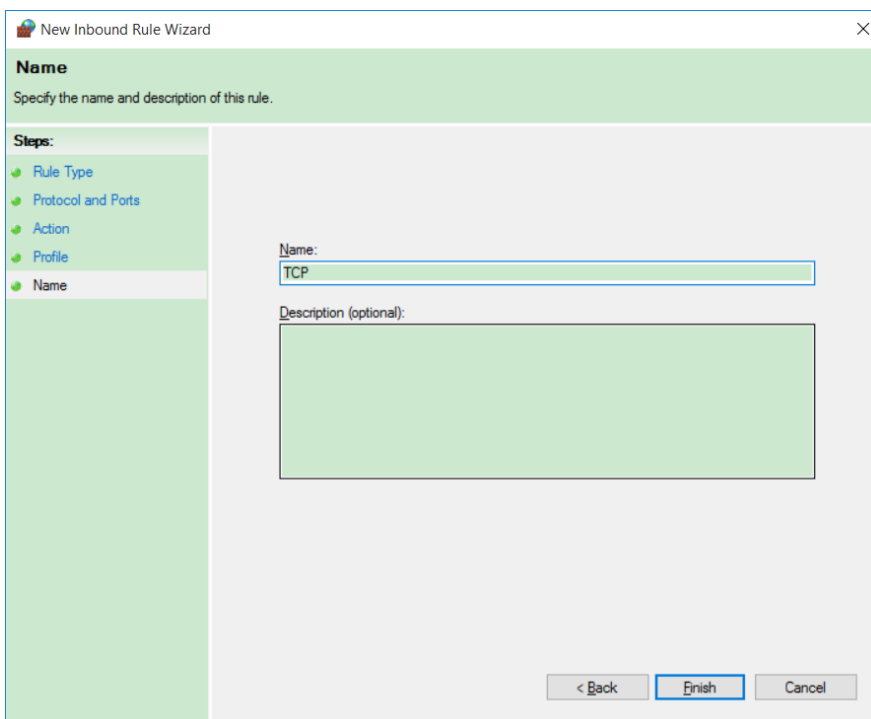
Block the connection

< Back Next > Cancel

3.7 Profile



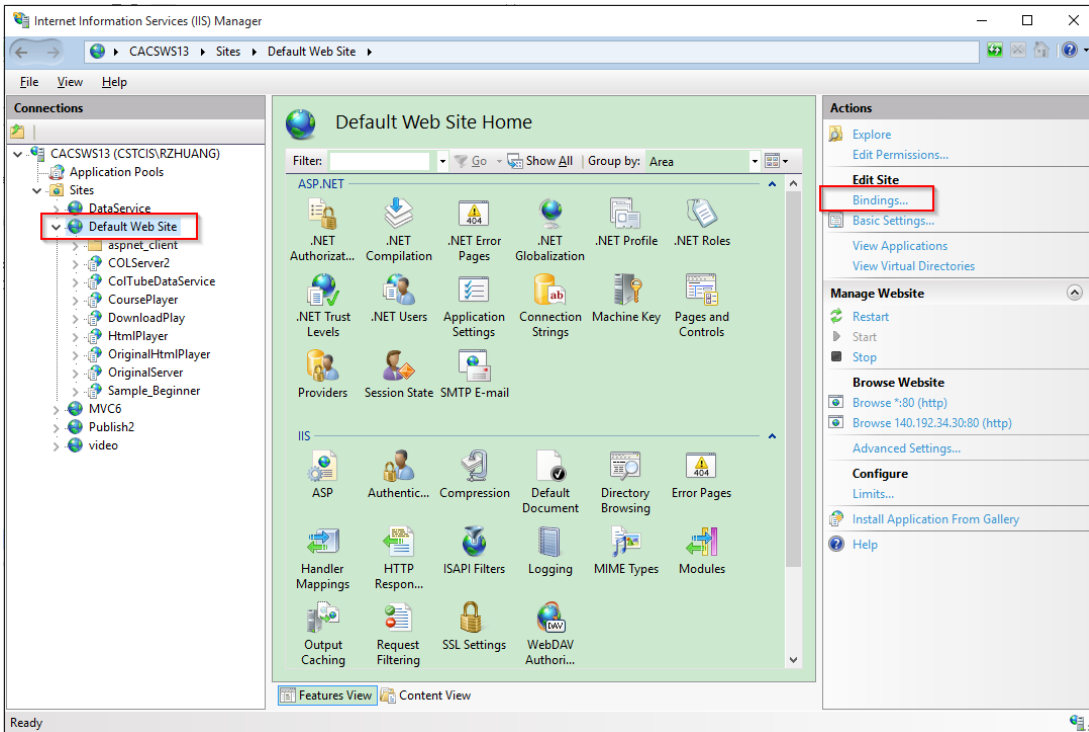
3.8 Name



After the above steps, your machine is exposed to the outside world.

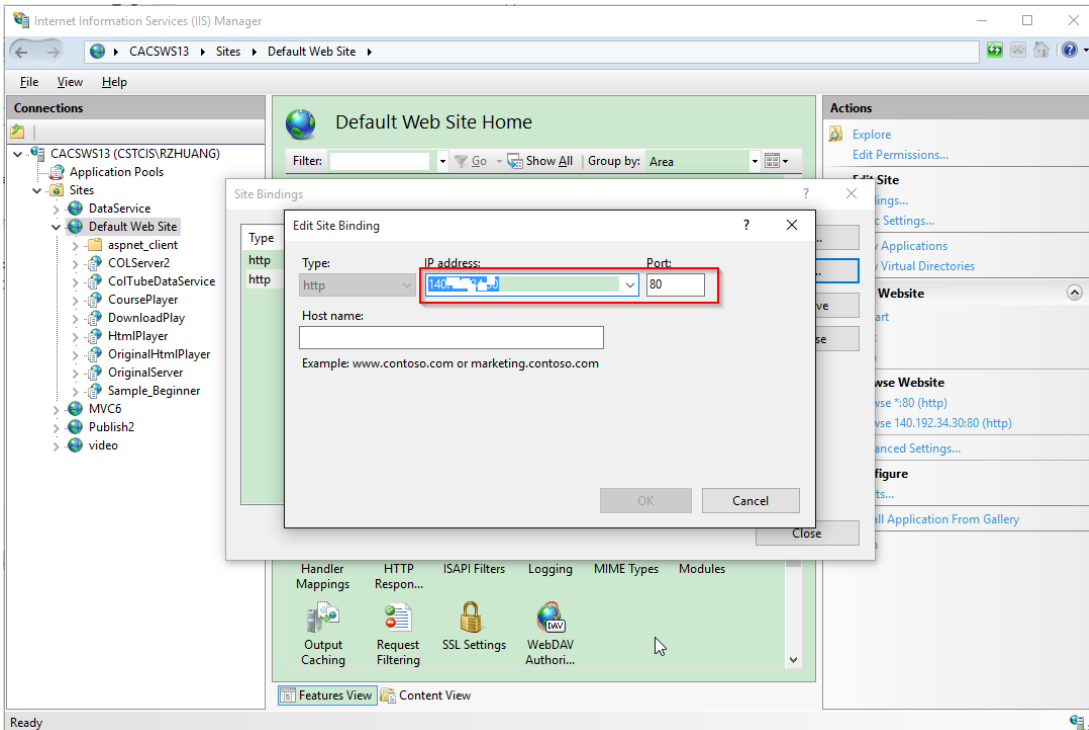
4. Assign Public IP address to your website.

4.1 In IIS, add Binding to web site

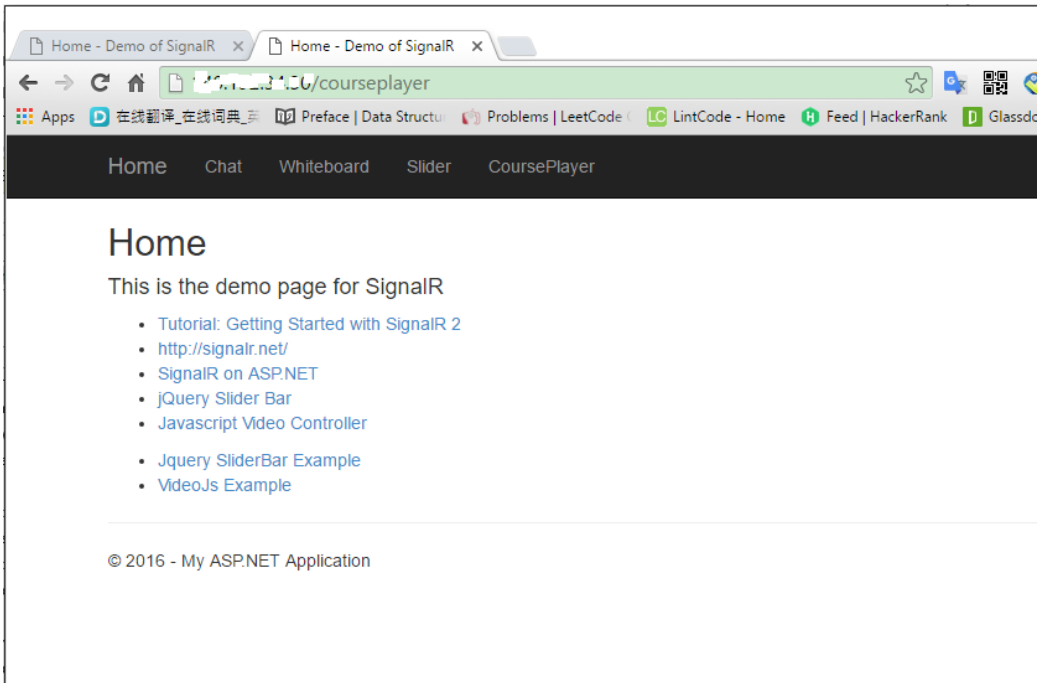


4.2 Set IP Address and Port.

If you choose another port, you must add the port number to firewall exception, refer to step 3.



4.3 Access website with ip address, don't miss the last slash.



4.4 Try this address in another machine.